



Service Info



Change to the material

of deflection pulley 532 0111 10

Manufacturers: Audi, Seat, Škoda, Volkswagen

Models:

Audi: A3
Seat: Cordoba, Ibiza III, Inca, Leon, Toledo II
Škoda: Fabia, Octavia
Volkswagen: Bora, Caddy II, Fox, Golf IV, New Beetle, Polo, Spacefox, Crafter

Engines: 1.9 D, 1.9 TDI, 1.9 SDI, 2.5 TDI

Part no.: 532 0111 10

OE numbers: 038 109 244 B (replaced)
 038 109 244 C (replaced)
 038 109 244 H (replaced)
 038 109 244 M (new)

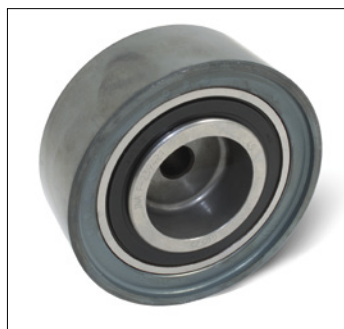


Bild 1: bisherige Ausführung aus Sintermetall



Bild 2: neue Ausführung aus Blech

As part of our continuous efforts to improve our products, the running surface material of deflection pulley 532 0111 10 has been changed from sintered metal to sheet metal.

During the changeover period, deflection pulleys with sintered metal or sheet metal running surfaces may be supplied.

Both deflection pulleys can be used universally for all vehicles detailed in the catalogues, despite their different designs.

Note the specifications of the vehicle manufacturer!

Spare parts and technical information can be found under www.schaeffler-aftermarket.com or www.RepXpert.com.

Phone: +44 (0) 14 32 264 264*
 Fax: +44 (0) 14 32 375 760
 info@luk-as.co.uk
 www.schaeffler-aftermarket.com

* Calls from within the UK 08457 001100

SCHAEFFLER
 AUTOMOTIVE AFTERMARKET

